

Excerpts from the full set of slides which were used at Cordis Briefing on Thursday 17<sup>th</sup> January 2019. Full slides are available for subscribers. Please click here to find out more: <https://www.cordisbright.co.uk/briefing.php>

# Cordis Briefing

## January 2019

 Follow @cordisbright



# Today's Briefing

- Introduction
- The State of Social Care
- PSS Expenditure Data
- NHS Long Term Plan

## BREAK

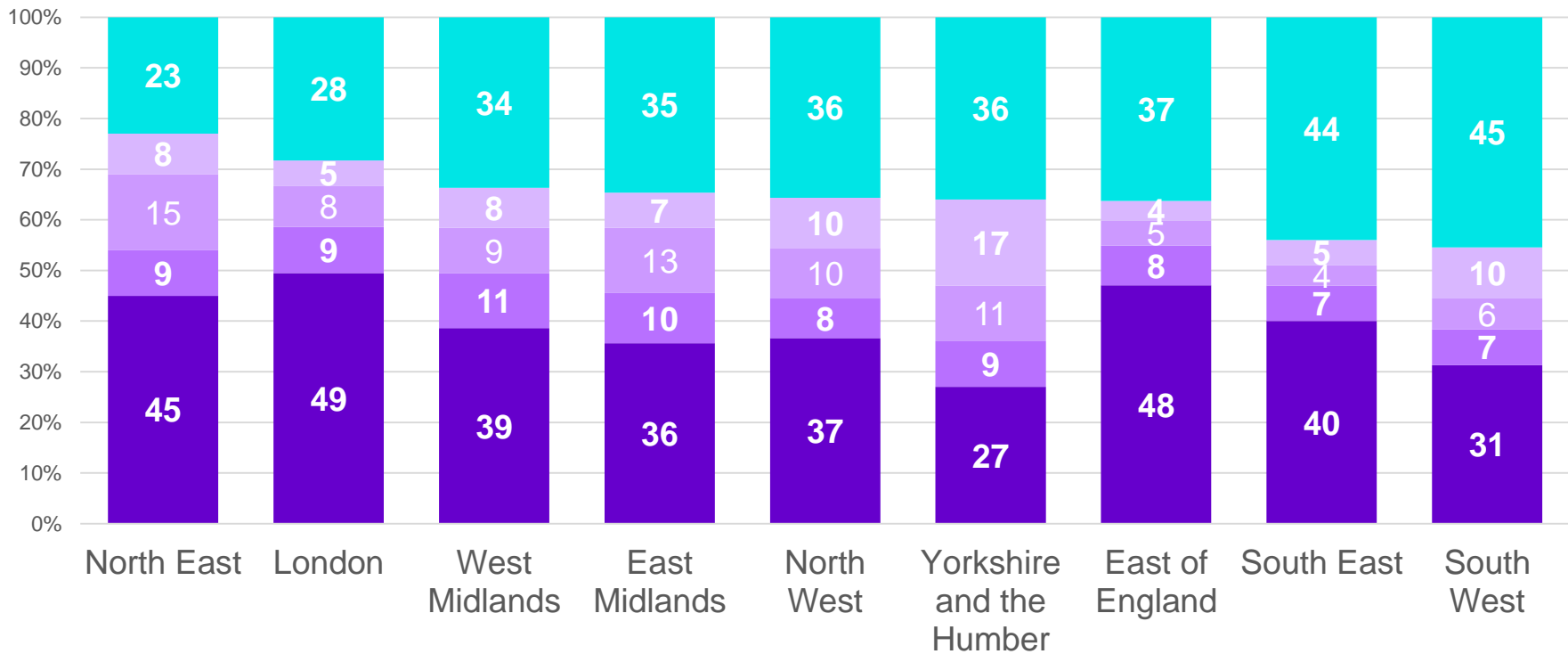
- Care and Support Needs of Older People
- Local Authority Finances

# LA control of care home markets

CQC data



# LA control of care home market



- Average % fully self funded
- Average % partly self funded
- Average % partly LA and/or NHS and/or charity funded
- Average % fully NHS funded
- Average % fully LA funded

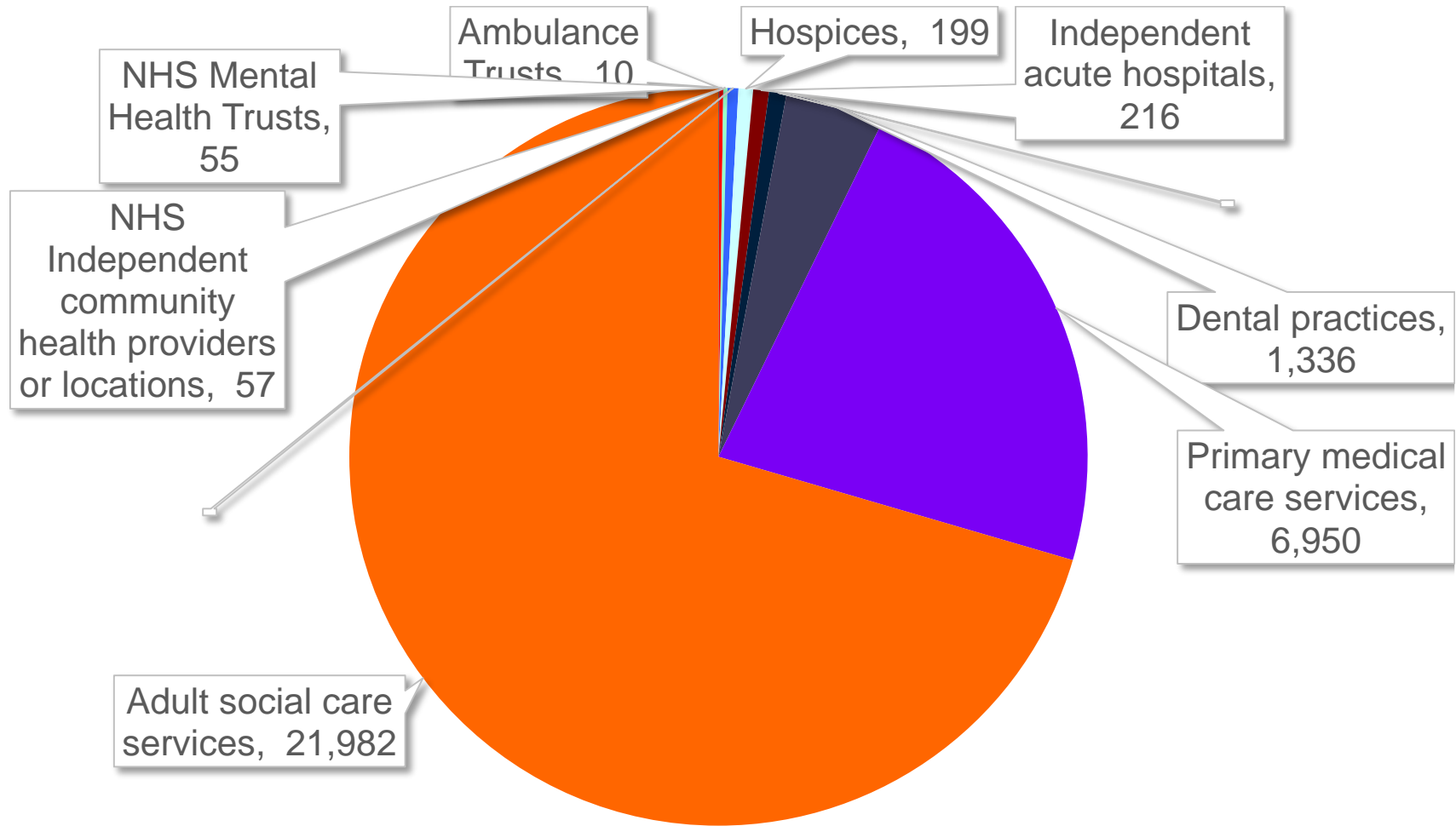
# State of health and social care 2018 – quality overview



## CQC – a bit of context

- Responsible for the registration of around 31,000 health and social care services, and the inspection of just under 30,000 (dental practices excluded)
- Looks at lots of different types of services but some very clear issues about scale of remit.

# CQC – a bit of context



# Four year trend in quality domains in social care

Question	What it means
Are they safe?	<b>Safe:</b> you are protected from abuse and avoidable harm
Are they effective?	<b>Effective:</b> your care, treatment and support achieves good outcomes, helps you to maintain quality of life and is based on the best available evidence
Are they caring?	<b>Caring:</b> staff involve and treat you with compassion, kindness, dignity and respect
Are they responsive to people's needs?	<b>Responsive:</b> services are organised so that they meet your needs
Are they well-led?	<b>Well-led:</b> the leadership, management and governance of the organisation make sure it's providing high-quality care that's based around your individual needs, that it encourages learning and innovation, and that it promotes an open and fair culture



# Four year trend in quality domains in social care

- General trend of improvement – things are getting better
- Some domains have improved more than others
- The biggest areas of improvements have been for ‘Safe’ and ‘Effective’
- The least improvement, but the consistently highest rating has been for ‘Caring’
- ‘Well-led’ shows the second lowest level of improvement and has become the greatest area of weakness in quality overall

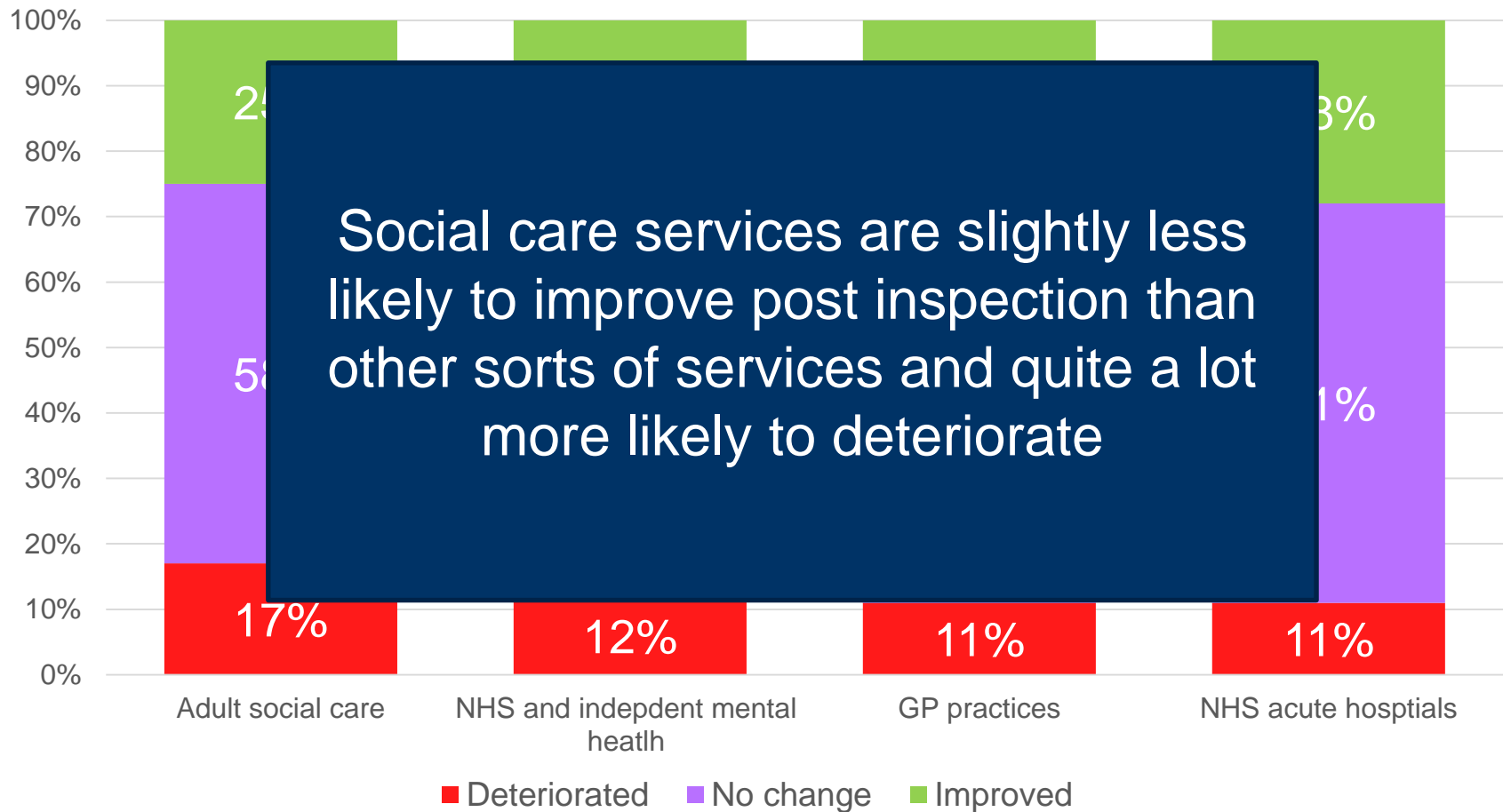
# Quality performance – four year trend



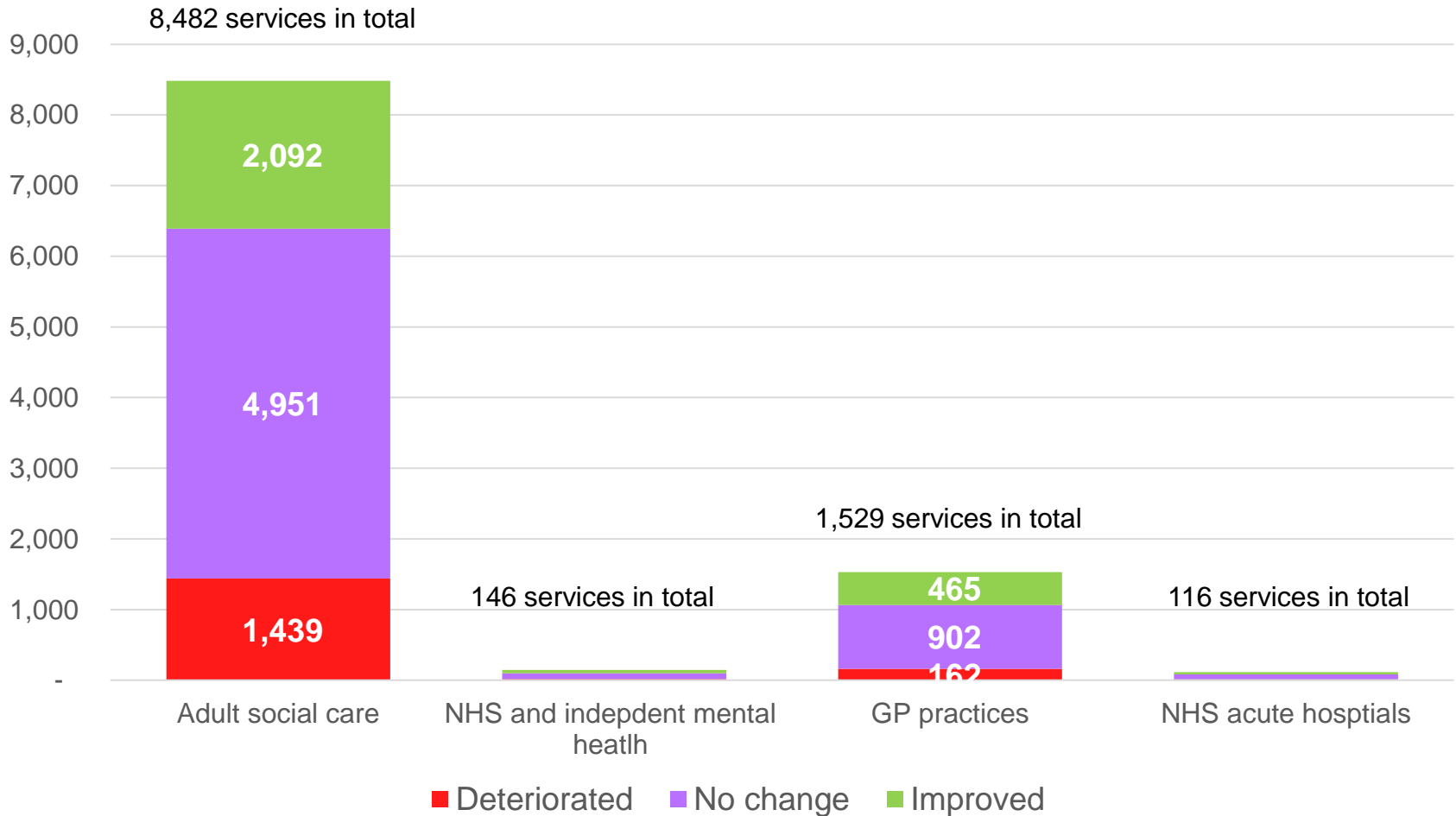
# Quality under performance – plateauing?



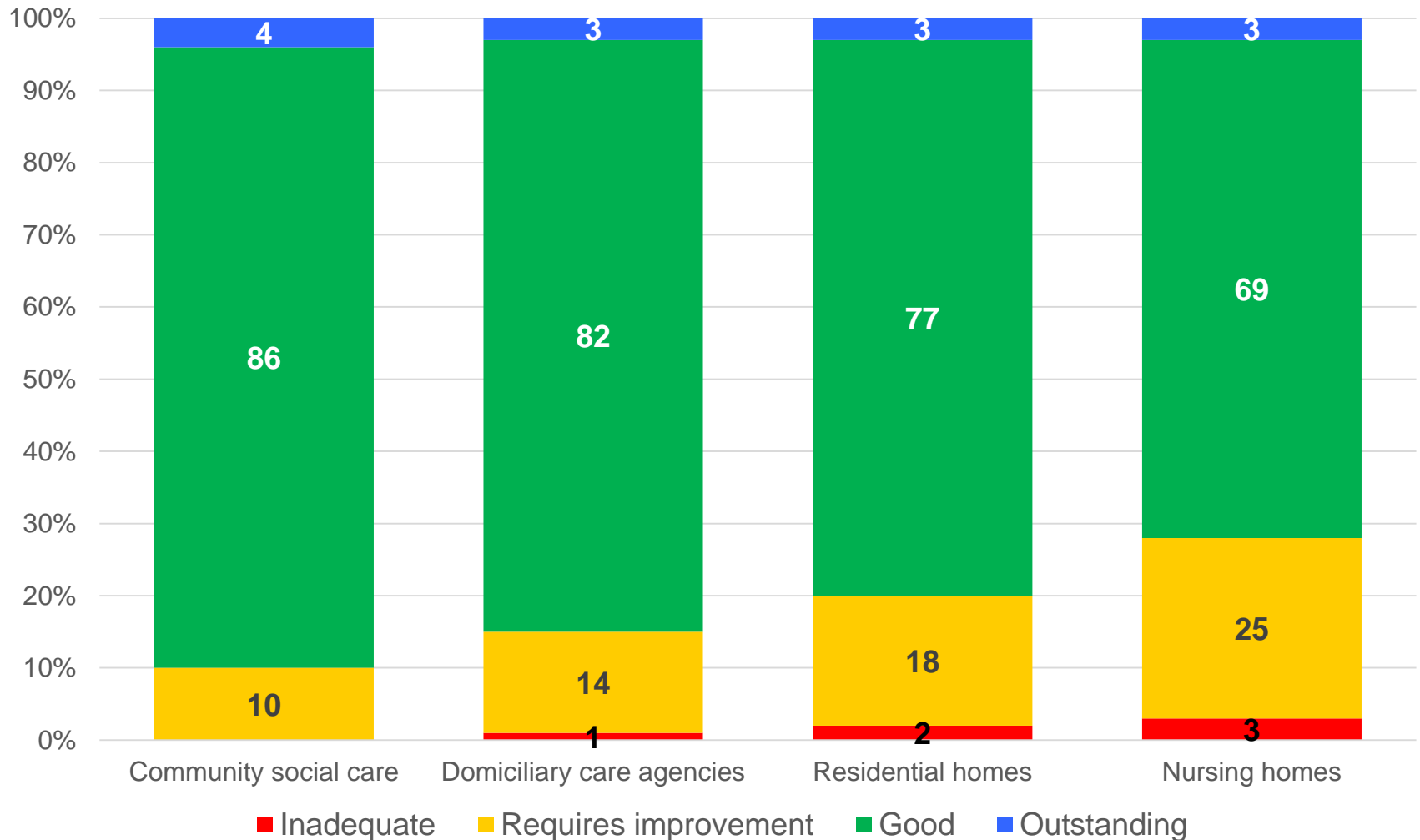
## Quality - capability to improve?



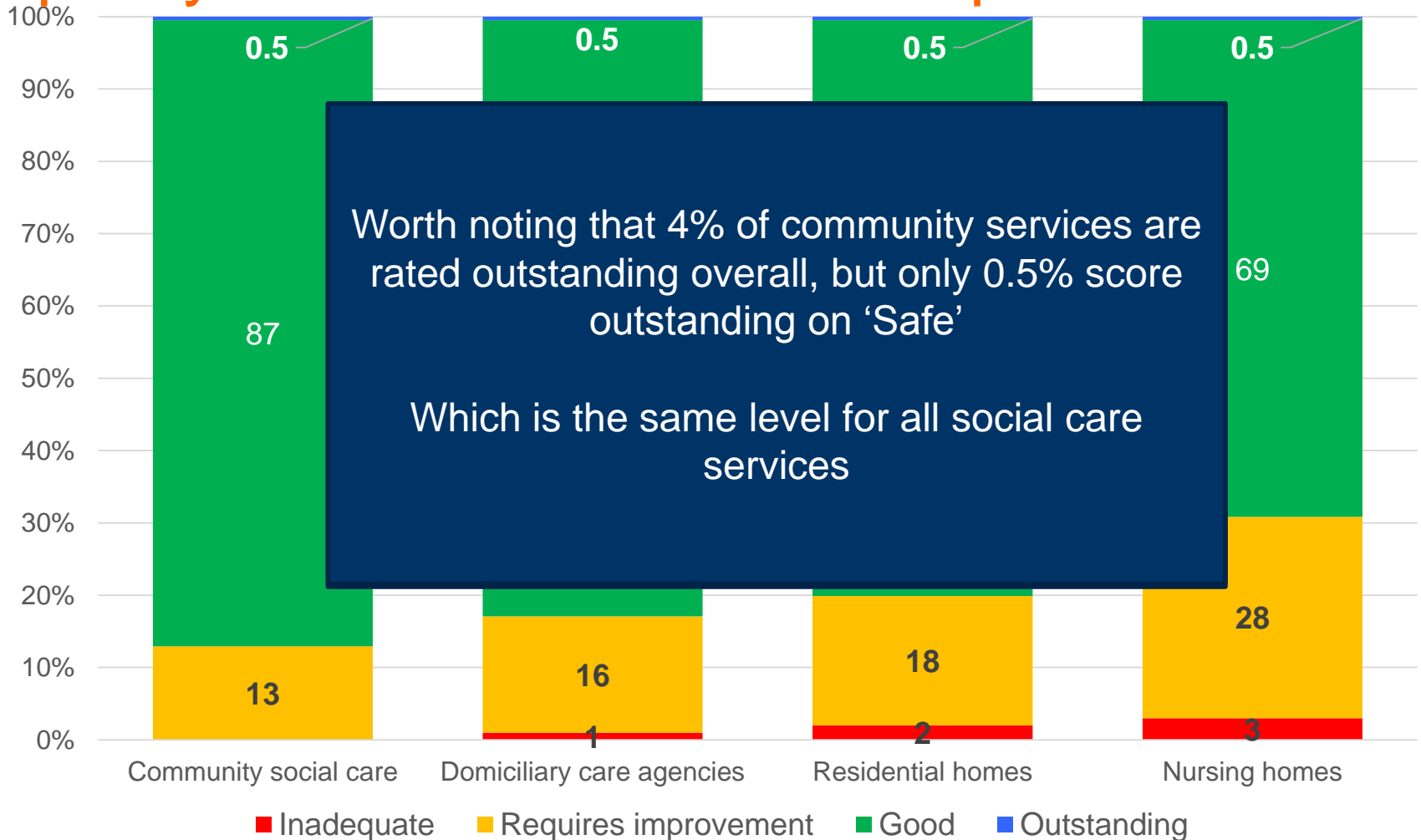
# Quality capability to improve?



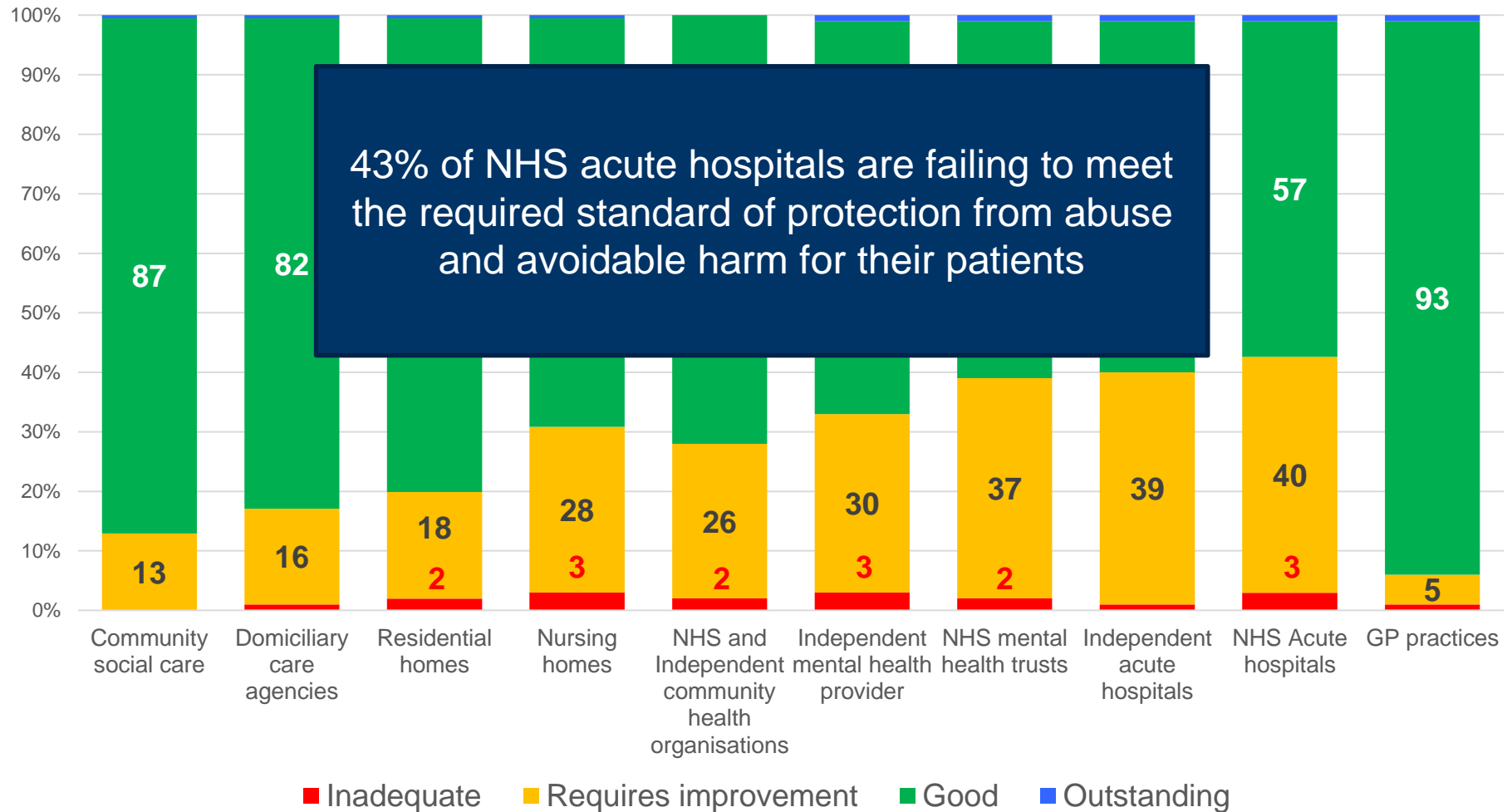
# Nursing home still have a problem with quality



# Nursing home still have a problem with quality – and ‘Safe’ domain in particular



# The 'Safe' quality domain seems to be a universal challenge





## Quality conclusions – social care

- There is a trend of improvement overall
- There is stubborn core of social care provision which fails to improve
- Worse post inspection outcomes compared with other sectors
- A clear problem around leadership and keeping people safe, particularly in nursing home settings



**Cordis**Bright Limited

23/24 Smithfield Street, London EC1A 9LF

<b>Telephone</b>	020 7330 9170
<b>Email</b>	<a href="mailto:info@cordisbright.co.uk">info@cordisbright.co.uk</a>
<b>Internet</b>	<a href="http://www.cordisbright.co.uk">www.cordisbright.co.uk</a>